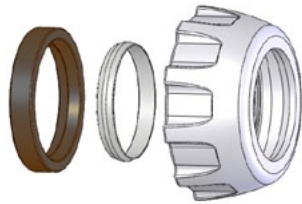




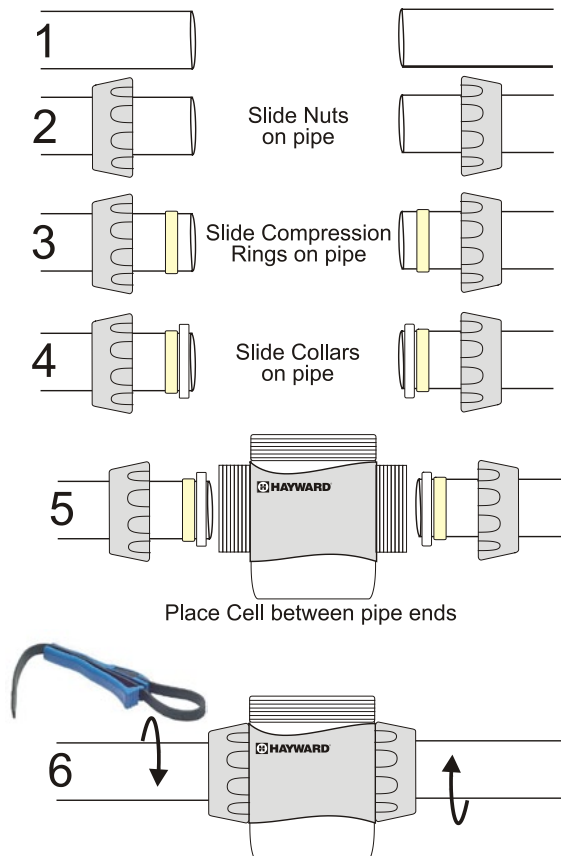
Salt & Swim™ Nut Assembly



Part #	Size
GLX-DIY-CCN2	2 in.
GLX-DIY-CCN15	1½ in.

Installation

Follow the Salt & Swim Quick Start Installation guide or the diagram below.



Insert pipe into Cell, hand tighten Nuts, and then use the included strap wrench to tighten an additional 1/4 turn

Hayward Pool Products
620 Division Street, Elizabeth NJ 07207
www.hayward.com